

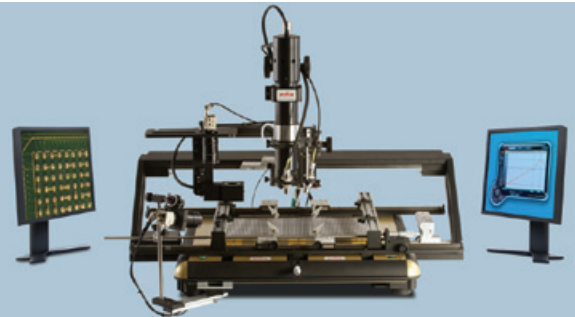


The World's Leading Manufacturer of BGA Rework Systems

PDR IR-E6 Evolution XL

Ultimate Performance, BGA Rework System for Very Large PCBs

- Medium - large sized PCBs - SMDs, BGAs, uBGAs
- Software controlled, Focused IR process
- Highly specified, ultra-accurate system



PDR IR-E3 Evolution

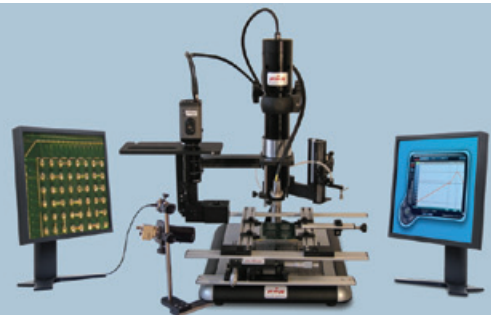
Ultimate Performance, BGA Rework System

- Small - medium sized PCBs - SMDs, BGAs, uBGAs
- Software controlled, Focused IR process
- Highly specified, ultra-accurate system

PDR IR-D3 Discovery

Lower Cost, BGA Rework System

- Small - medium sized PCBs - SMDs, BGAs, uBGAs
- Software controlled, Focused IR process
- Lower cost, good mechanics



PDR IR-C3 Chipmate

Entry-Level SMT/BGA Rework Station

- Mobile phone, PDAs, laptop repair - SMDs, BGAs, CSPs
- Digital controlled, Focused IR process
- Lower cost, simple mechanics

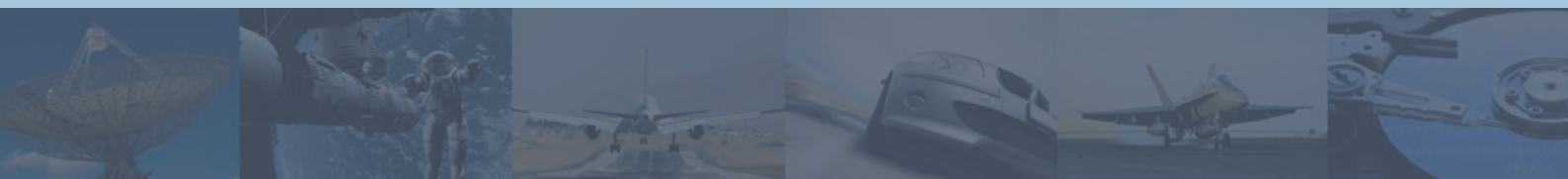
PDR IR-C1 Solderlight Professional

Professional IR Rework Handtool

- For the rework of SMDs, BGAs, CSPs
- Closed-loop temperature control
- Precise hand held vacuum pick-up tool



www.pdr-rework.com



PDR System	IR-C1	IR-C3	IR-D3	IR-E3	IR-E6
Typical Application	Professional IR Rework Handtool - small/medium SMDs	Entry-Level SMT/BGA Rework Station - small/medium PCBs	Professional BGA Rework System - small/medium PCBs	Ultimate Performance, BGA Rework System for Small-Medium PCBs	Ultimate Performance, BGA Rework System for Very Large PCBs
PDR System Features					
Advanced Focused IR Component Heating	IR-C1	IR-C3	IR-D3	IR-E3	IR-E6
Focused IR Lens System		●	●	●	●
F150 - Ø 6-18mm - Lens Attachment		○	○	○	○
F200 - Ø10-28mm - Lens Attachment		○	○	○	○
F400 - Ø12-35mm - Lens Attachment		○	○	○	○
F700 - Ø20-70mm - Lens Attachment		●	●	●	●
Focused IR - Hand Tool - Ø14mm IR Spot	●				
Quartz IR PCB Preheating	IR-C1	IR-C3	IR-D3	IR-E3	IR-E6
750W, single zone (120mm x 120mm heating area)	●	○	○	○	
2000W, single zone (240mm x 240mm heating area)	○	●			
2000W, two zone (240mm x 240mm heating area)			●	●	
2800W, three zone (240mm x 360mm heating area)				○	
3200W, two zone (500mm x 270mm heating area)					●
Component Pick and Placement	IR-C1	IR-C3	IR-D3	IR-E3	IR-E6
Handheld vacuum placement system	●	●			
Standard vacuum placement system (Z-axis and Rotation)		○			
Professional vacuum placement system (Z-axis, Rotation and Soft Landing)			●		
Advanced Professional vacuum placement system (Y/Z-axis, Rotation and Soft Landing)				●	●
Component Nest/Flux Application Facility	IR-C1	IR-C3	IR-D3	IR-E3	IR-E6
Handheld flux dip tray or component print frame	○	○	●		
Jaw mounted nest with flux dip tray or component print frame			○		
Integrated nest with flux dip tray or component print frame				●	●
PCB Handling (PCB Capacity)	IR-C1	IR-C3	IR-D3	IR-E3	IR-E6
Portable Benchtop Mounted PCB Workholder (12" x 10"/300mm x 250mm)	●	●			
Professional PCB table with micro X/Y (18" x 12"/450mm x 300mm)			●		
Advanced Professional PCB table with macro-micro X/Y (18" x 12"/450mm x 300mm)			○	●	
XL Advanced Professional PCB table with macro-micro X/Y (24" x 18"/620mm x 460mm)					●
Component Temperature Sensing	IR-C1	IR-C3	IR-D3	IR-E3	IR-E6
Standard non-contact IR temperature sensor (Pyrometer) - Ø7mm+ Spot	○	●	●	●	●
PCB Temperature Sensing	IR-C1	IR-C3	IR-D3	IR-E3	IR-E6
K-type wire thermocouple	●	●	●	●	
Standard non-contact IR temperature sensor (Pyrometer) - Ø7mm+ Spot			○	○	●
Advanced Thermal Process Control	IR-C1	IR-C3	IR-D3	IR-E3	IR-E6
Digital controller based thermal control	●	●	○		
Software based auto profile thermal control			●	●	●
Camera Based Vision Systems	IR-C1	IR-C3	IR-D3	IR-E3	IR-E6
Camera/Prism Based BGA/CSP/QFN Alignment System			○	●	●
Auxillary Process Observation Camera			○	○	○
Forced Air PCB Cooling	IR-C1	IR-C3	IR-D3	IR-E3	IR-E6
Simple USB/free standing cooling fan	○	○	○	○	○
Highly effective, integral PCB cooling with air knife system				○	○

● = Standard Feature ○ = Optional Feature